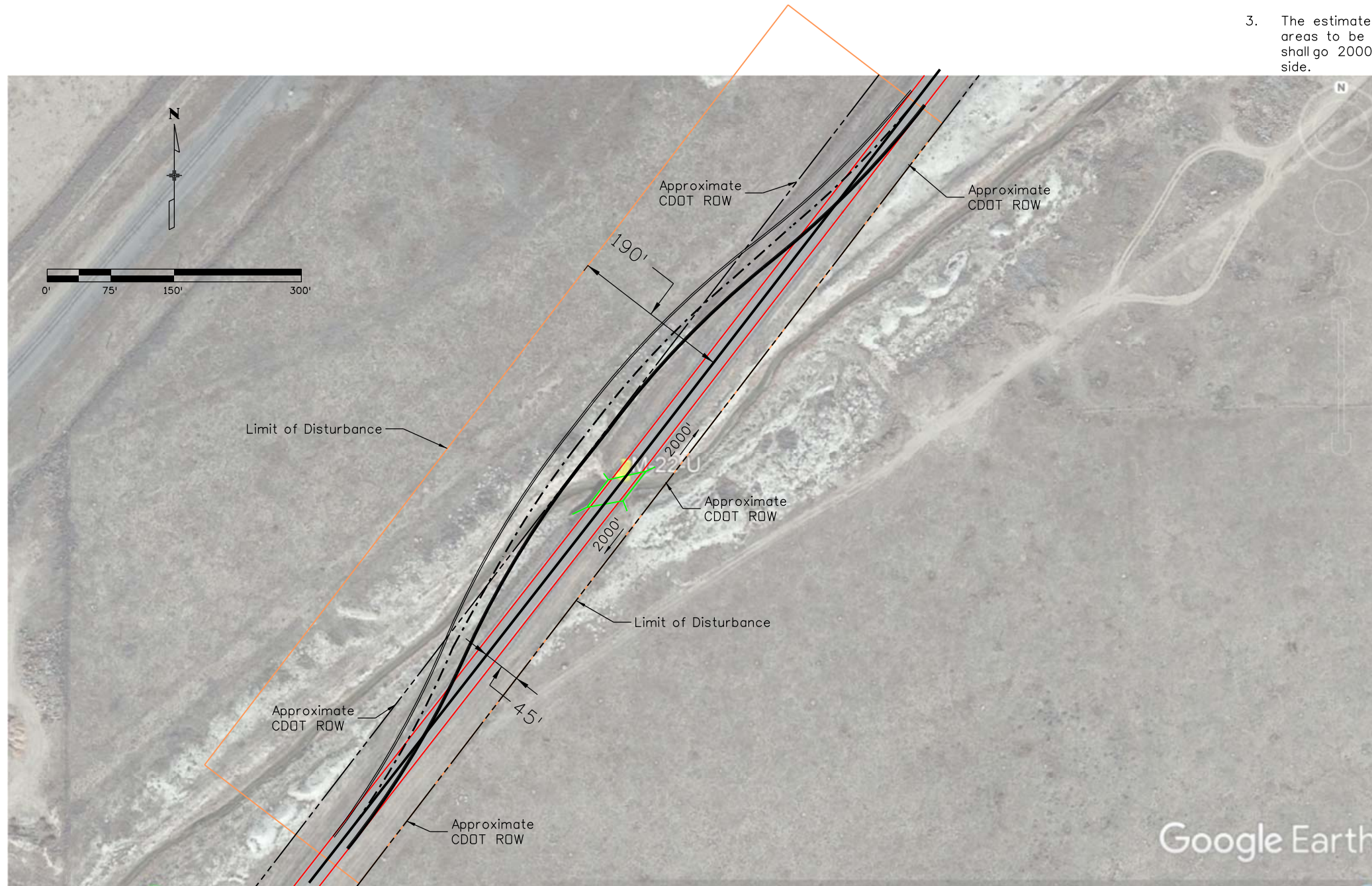




NOTES:

1. See spreadsheet for approximate distance outside of ROW and design calcs.
2. It is assumed that a two lane by-pass detour will be used during construction.
3. The estimated limits of disturbance are the limits for the areas to be Environmentally Cleared. Environmental clearance shall go 2000' away from bridge on approach and departure side.



vigilpm 8:05:25 AM C:\Users\vigilpm\Documents\Projects\23558 & 23559 - Region 2 Bridge Bundle\Detours\M-22-U\_PreliminaryDetour.dgn

Print Date: 6/2/2020	0000
File Name: M-22-U_PreliminaryDetour.dgn	
Horiz. Scale: 1:150      Vert. Scale: As Noted	
Unit Information      Unit Leader Initials	

Sheet Revisions		
Date:	Comments	Init.

**Colorado Department of Transportation**  
 5615 Wills Blvd  
 Pueblo, CO 81008  
 Phone: 719-546-5753  
 FAX: 719-546-5414

**Region 2** **JLB**

<b>As Constructed</b>
No Revisions:
Revised:
Void:

<b>M-22-U PRELIMINARY DETOUR ENVIRONMENTAL CLEARANCE AREA</b>			
Designer:	PMV	Structure Numbers	X-XX-XX
Detailer:	PMV	Structure Numbers	X-XX-XX
Sheet Subset:	XXXXXXX	Subset Sheets:	XXX of XXX

<b>Project No./Code</b>
FRB R200-266
23558
Sheet Number <b>XXX</b>